

# FIRE SAFETY MADE EASY

Morley-IAS Plus



**Honeywell**

MORLEY IAS

# MORLEY-IAS PLUS FIRE ALARM PANELS



Morley-IAS Plus control panel includes Honeywell's Advanced (AP) protocol which maximises the speed and efficiency of alarm detection, as well as providing maximum information to the installer. The 4.3" (480x272 pixel) touchscreen provides an intuitive user interface via its menus with quick and easy system operation. The Plus control panel allows full system configuration from the screen itself. The Plus is a single loop addressable panel expandable to two loops with an optional loop card (PL-LIB01S). Each loop supports 159 detectors and 159 input / output modules.

## KEY FEATURES

- 4.3" / 109.2 cm touchscreen graphical color display, 480 x 272 pixel resolution with back illumination and back-lit membrane buttons
- Multiple language selections
- Intuitive colour event indication tab for an overview of system status at a glance
- Simple DOT Matrix Cause & Effect rule builder.
- Quick configuration of the unit from the same display
- On-screen 16 Virtual Zonal LED indicators with event color coding to increase situational awareness.
- Single loop, expandable to 2 loops. 318 addresses per loop (159 detector + 159 Modules)
- Certified to EN54-2, EN54-4; EN54-13; LVD 62.368-1:2014+A11
- Morley-IAS Advanced Protocol
- Enhanced Agile™ wireless features, including on-screen device battery and signal strengths
- Includes serial communication ports for TPP, including the integration of Honeywell's Connected Life Safety Services (CLSS) cloud-based platform\*

## SUITABLE FOR A WIDE RANGE OF APPLICATIONS



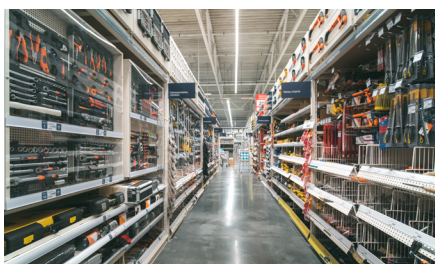
**RESIDENTIAL**



**SCHOOLS**



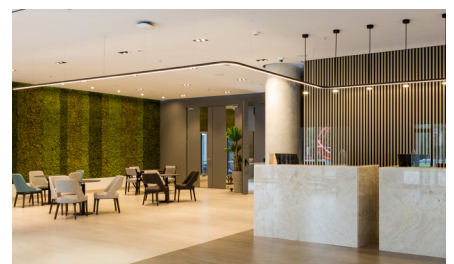
**RESTAURANTS**



**SHOPS AND RETAIL CHAINS**



**OFFICE SPACES**



**HOTELS**

## BENEFITS

- Minimal fire system expertise needed for installation and commissioning
- Less disruption during installation
- Commissioning in less than 2 hours
- Reduced total cost of ownership
- CLSS connectivity\*
- Enhanced wireless device diagnostic

PRODUCT INFORMATION	
<b>PL-1000</b>	Morley-IAS Plus compact addressable fire panel with single loop - supporting up to 318 addressable devices
<b>PL-LIB01S</b>	Optional loop module PL-LIB01S adds an additional loop to PL-1000, expanding the system up to two loops

\*coming soon

# MORLEY-IAS SYSTEM SENSOR ADVANCED PROTOCOL

The Morley-IAS Plus works with the current range of MIAS/System Sensor Protocol devices. However, Plus utilises Advance Protocol which enables 159 detectors and 159 Modules per loop (318 Addresses).

Advance Protocol also delivers optimised device identification and increased device data, which maximises the speed during installation, commissioning, and overall safety.

## KEY FEATURES

- Fast installation with rotatory addressable switches (01-159)
- Enhanced smoke chamber design to reduce false alarms by dust or contamination
- Dual integrated LED for 360° visibility
- Base complements the detector and is easy to install and wire
- Environment friendly – meets RoHS legislative requirements



# WIRELESS FIRE DETECTION

The Agile™ Wireless Fire Detection system offers unmatched levels of communication reliability and installation flexibility. It provides a robust and efficient method of delivering an integrated fire detection solution across a wider variety of applications, with greater simplicity and scalability. The platform is built on a powerful mesh technology, with multiple communication paths to minimise interference and maximise system robustness.

## KEY FEATURES

- Mesh technology with multiple communication paths for increased reliability
- 18RF channels at 868MHz - provides greater tolerance to interference
- Two integrated antennas on each wireless device
- Up to 400 m free air communication range – providing good coverage levels
- Average 5 year battery service life – reducing maintenance requirements
- Addresses set using rotary switches – reduced commissioning time
- Wired fire devices look and feel – easier installation and visual integration
- Patented battery service life prediction feature – more proactive maintenance
- Loop powered Gateway – reduced installation cost and time
- Up to 8 Gateways per loop
- Up to 32 Wireless devices per Gateway
- Agile™ IQ 4 in 1 software for easy design, survey, configuration and diagnostics

